

RECEIVED

January 23, 2024

CITY OF SAN RAMON
PLANNING SERVICES



LABORER'S UNION SITE - SB330 PRELIMINARY SUBMITTAL

City of San Ramon, California 94582

January 11, 2024

Sheet Index

Cover Sheet CS

Architecture

Preliminary Site Plan SP

Plan A1 Elevations A1

Plan A2 Elevations A2

Exterior Color & Materials A3

Project Team:



Applicant: Summerhill Homes
3000 Executive Parkway, Suite 450
San Ramon, CA 94583
Contact: Steve Bull
650.842.2285



Architect: WHA Architects
5000 Executive Parkway, Suite 375
San Ramon, CA 94583
Contact: Robert Lee
925.463.1700



Civil Engineer: CBG
2633 Camino Ramon, Suite 350
San Ramon, CA 94583
Contact: Ryan Hansen
925.866.0322

LOT SUMMARY		
LOT NO.	LOT AREA (SF)	PLAN TYPE
1	9,450	PLAN 1
2	9,450	PLAN 1
3	9,450	PLAN 1
4	9,450	PLAN 1
5	8,396	PLAN 1
6	9,397	PLAN 1
7	7,875	PLAN 2
8	7,875	PLAN 2
9	7,875	PLAN 2
10	7,875	PLAN 2
11	7,875	PLAN 2
12	7,875	PLAN 2
13	7,875	PLAN 2
14	7,875	PLAN 2
15	7,875	PLAN 2
16	9,375	PLAN 2
17	8,669	PLAN 2
18	9,450	PLAN 2
19	9,450	PLAN 2
20	9,450	PLAN 2
21	9,450	PLAN 2
22	9,975	PLAN 2
23	12,471	PLAN 2



GENERAL NOTES

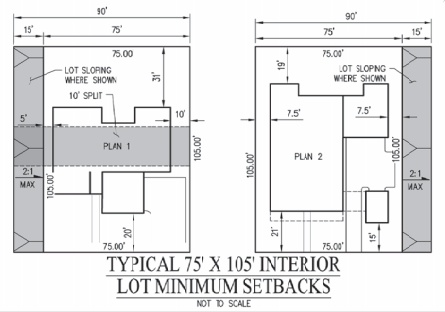
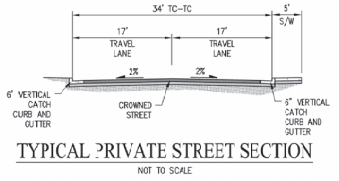
1. SITE AREA: 20.02 AC
2. ZONING: HILLSIDE RESIDENTIAL (HR)
3. FLOOD ZONE: ZONE X (FEMA MAP NUMBER: 0603C0377F)

ABBREVIATIONS

- CL CENTERLINE
- GB GRADE BREAK
- P PAD ELEVATION
- S/W SIDEWALK
- TC TOP OF CURB

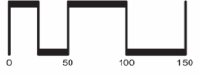
LEGEND

- PROPERTY BOUNDARY
- - - EXISTING RIGHT OF WAY
- - - ADJACENT PROPERTY
- - - EXISTING FAULT LINE
- - - PROPOSED LOT LINE
- - - BOTTOM OF SLOPE
- - - EXISTING CONTOURS
- - - PROPOSED CURB AND SIDEWALK
- - - PROPOSED 1'-2' RETAINING WALL
- - - EXISTING V-DITCH
- - - PROPOSED LOT SLOPING (2:1 MAX)
- - - PROPOSED SLOPING
- - - PROPOSED 5' RETAINING WALL
- - - DAYLIGHT LINE



LABORER'S UNION SITE
SB330 PRELIMINARY SUBMITTAL

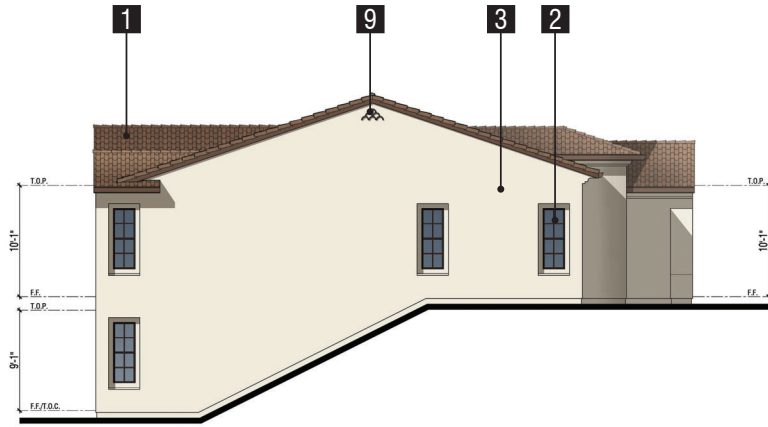
CITY OF SAN RAMON CONTRA COSTA COUNTY CALIFORNIA
SCALE: 1" = 50' DATE: JANUARY 2024



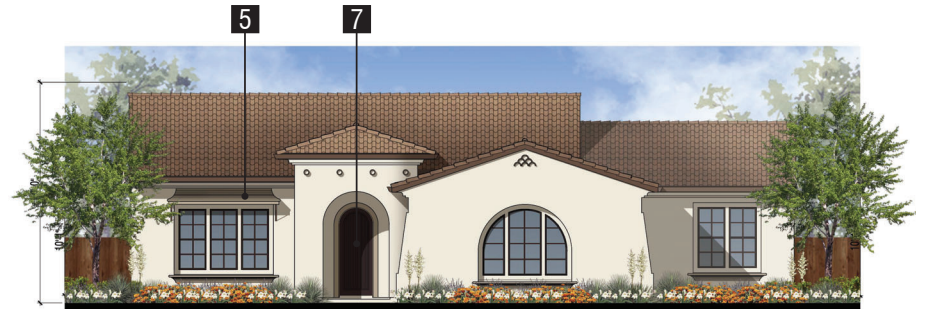
SAN RAMON • (925) 866-0322
ROSEVILLE • (916) 788-4456
WWW.CBANG.COM



61155102A02ENR1533401_SB330.XB.DWG



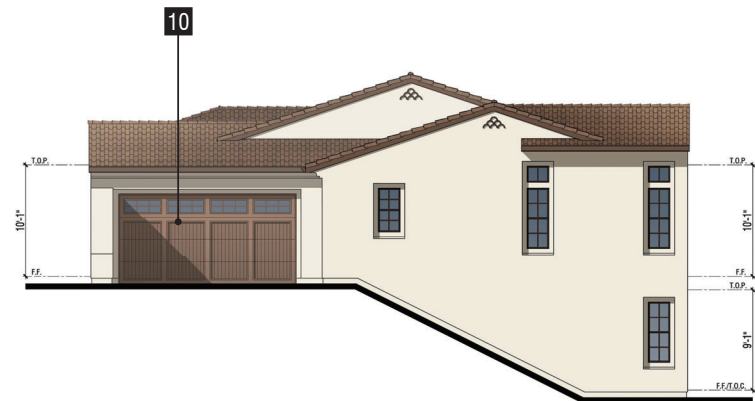
Left Elevation



Front Elevation
Color Scheme #1



Rear Elevation



Right Elevation

Exterior Materials:

- 1 Concrete 'S' Tile Roofing
- 2 Insulated Vinyl Windows
- 3 Stucco
- 4 Stucco Over Foam Trim
- 5 Stucco Canopy
- 6 2X Wood Fascia
- 7 Fiberglass Entry Door
- 8 Metal Railing
- 9 Decorative Pipe Tile
- 10 Decorative Metal Roll-Up Garage Door

PLAN 1A
Exterior Elevations

LABORER'S UNION SITE

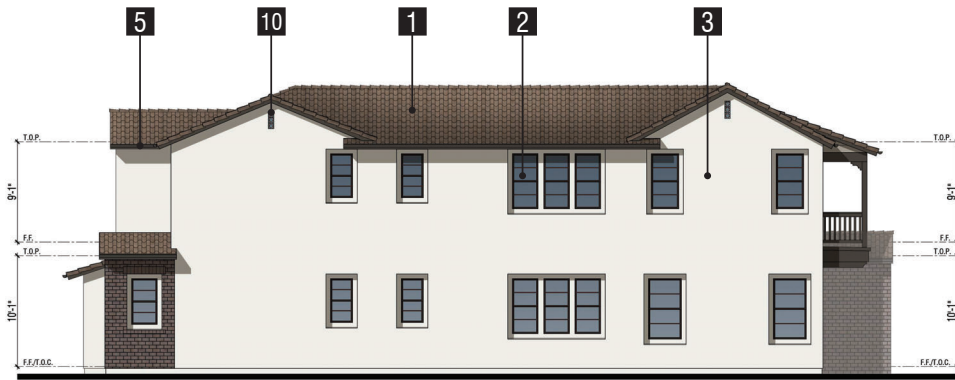
SAN RAMON, CA

Note: Artist's Conception; Colors, Materials
And Application May Vary.

0 4 8 16
A1

SB330 PRELIMINARY SUBMITTAL

© 2024 WILLIAM HEZMALHALCH ARCHITECTS, INC. DBA WHA. | 2023383 | 01-11-24



Left Elevation



Front Elevation
Color Scheme #2



Rear Elevation



Right Elevation

Exterior Materials:

- | | |
|-----------------------------|---|
| 1 Concrete 'S' Tile Roofing | 7 Fiberglass Entry Door |
| 2 Insulated Vinyl Windows | 8 Wood Railing |
| 3 Stucco | 9 Manufactured Brick Veneer |
| 4 Stucco Over Foam Trim | 10 Decorative Ceramic Tile |
| 5 2X Wood Fascia | 11 Decorative Foam Shutters |
| 6 Wood Trim | 12 Decorative Metal Roll-Up Garage Door |

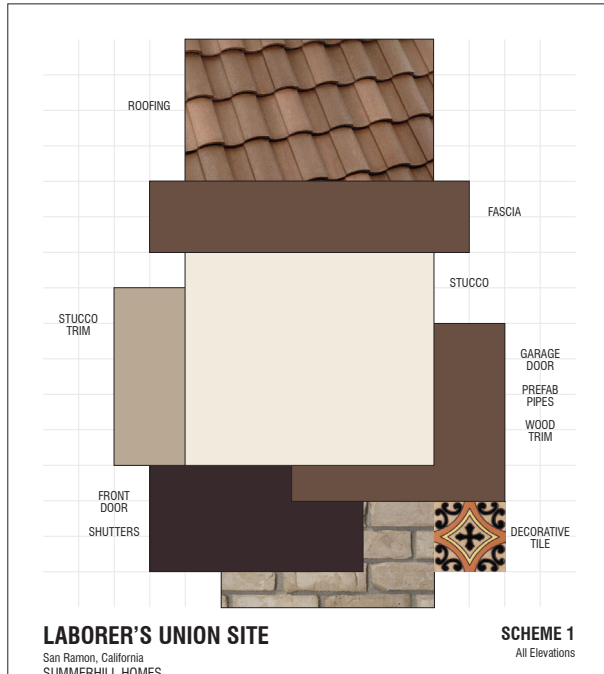
PLAN 2A
Exterior Elevations

LABORER'S UNION SITE

SAN RAMON, CA

Note: Artist's Conception; Colors, Materials
And Application May Vary.





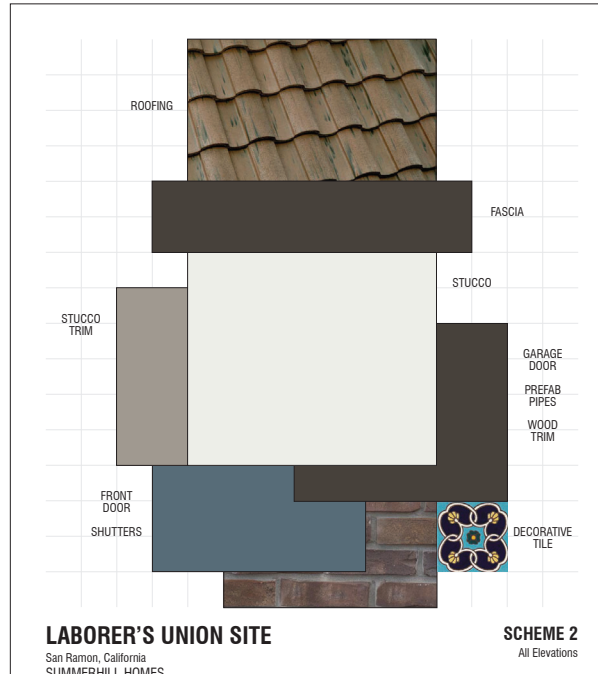
LABORER'S UNION SITE
 San Ramon, California
 SUMMERHILL HOMES
 December 19, 2023 | 2023383

SCHEME 1
 All Elevations

For exact color refer to manufacturers' actual samples.
 © 2023 WILLIAM HEZMALHALCH ARCHITECTS, INC. DBA WHA

Exterior Color & Materials		ALL ELEVATIONS	
Material	Color	Manufacturer	
Roofing: Concrete "C" Tile	3046 Sunset Blend Ref. 19 Em. SA A.SB: 17 CRIC: 0918-0042	Eagle	
Metal Bird Step @ "C" Tile (factory finish)	Match to Roofing Tile Color	Eagle	
View Windows (factory finish)	Espresso	Milgard	
Gutters & Downspouts (factory finish)	Match Adjacent Color	Sherwin Williams	
Brick (standard raked joints)	Covestry Thin Brick	H.C. Modjeski	
Grout @ Brick	Soft White	Orco	
Stucco Color	SW 0050 Classic Light Buff	Sherwin Williams	
Trim Color #1 (applied to): Sarge Boards Eaves Fascia Garage Door Prefabricated Pipes Posts & Braces Pit Shelves Railing Wood Trim	SW 7520 Dark Brown	Sherwin Williams	
Trim Color #2 (applied to): Stucco Trim	SW 7548 Parlour	Sherwin Williams	
Accent Color (applied to): Front Door Shutters	SW 7630 Raisin	Sherwin Williams	
6" X 6" Decorative Ceramic Tile	SD 101-A	Arto Tile Studio	
Grout @ Ceramic Tile	Match Stucco Color	TDI	

NOTE: Verify SWA if any variation occurs between these elevations and the manufacturer's actual samples prior to production.
 Contact Color Match (925) 483-1700. © 2023 WILLIAM HEZMALHALCH ARCHITECTS, INC. DBA WHA



LABORER'S UNION SITE
 San Ramon, California
 SUMMERHILL HOMES
 December 19, 2023 | 2023383

SCHEME 2
 All Elevations

For exact color refer to manufacturers' actual samples.
 © 2023 WILLIAM HEZMALHALCH ARCHITECTS, INC. DBA WHA

Exterior Color & Materials		ALL ELEVATIONS	
Material	Color	Manufacturer	
Roofing: Concrete "C" Tile	3581 Arcadia Canyon Brown Ref. 19 Em. SA A.SB: 10 CRIC: 0918-0043	Eagle	
Metal Bird Step @ "C" Tile (factory finish)	Match to Roofing Tile Color	Eagle	
View Windows (factory finish)	Espresso	Milgard	
Gutters & Downspouts (factory finish)	Match Adjacent Color	Sherwin Williams	
Brick (standard raked joints)	Mendocino Thin Brick	H.C. Modjeski	
Grout @ Brick	Soft White	Orco	
Stucco Color	SW 7005 Pure White	Sherwin Williams	
Trim Color #1 (applied to): Sarge Boards Eaves Fascia Garage Door Prefabricated Pipes Posts & Braces Pit Shelves Railing Wood Trim	SW 7675 Sealskin	Sherwin Williams	
Trim Color #2 (applied to): Stucco Trim	SW 7662 Pavestone	Sherwin Williams	
Accent Color (applied to): Front Door Shutters	SW 7604 Smoky Blue	Sherwin Williams	
6" X 6" Decorative Ceramic Tile	SD 114-A	Arto Tile Studio	
Grout @ Ceramic Tile	Match Stucco Color	TDI	

NOTE: Verify SWA if any variation occurs between these elevations and the manufacturer's actual samples prior to production.
 Contact Color Match (925) 483-1700. © 2023 WILLIAM HEZMALHALCH ARCHITECTS, INC. DBA WHA

Exterior Color & Materials

All Elevations

LABORER'S UNION SITE

SAN RAMON, CA



Note: Artist's Conception; Colors, Materials
 And Application May Vary.

SB330 PRELIMINARY SUBMITTAL
 © 2024 WILLIAM HEZMALHALCH ARCHITECTS, INC. DBA WHA. | 2023383 | 01-11-24

A3



ORANGE COUNTY · LOS ANGELES · BAY AREA · SACRAMENTO